

# Ice Cave Trail #608



**Distance:** 3.6 miles

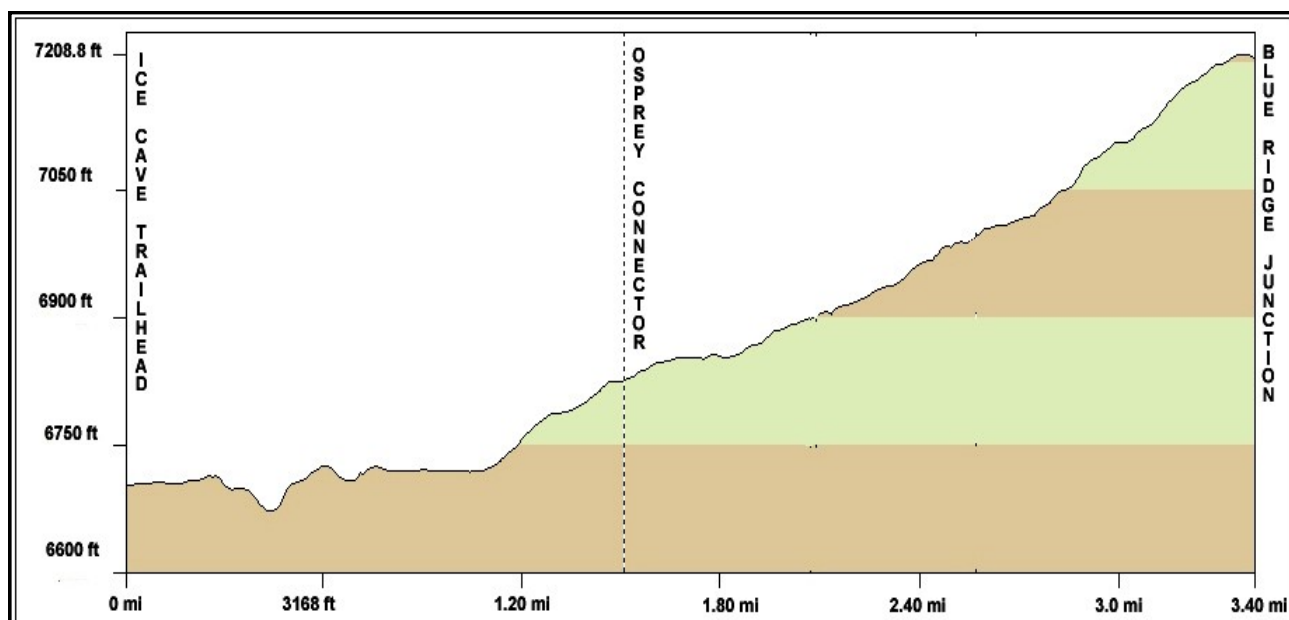
**Difficulty: (as rated by the US Forest Service)**

Hiking - Moderate  
Mountain Biking - Difficult  
Equestrian - Moderate

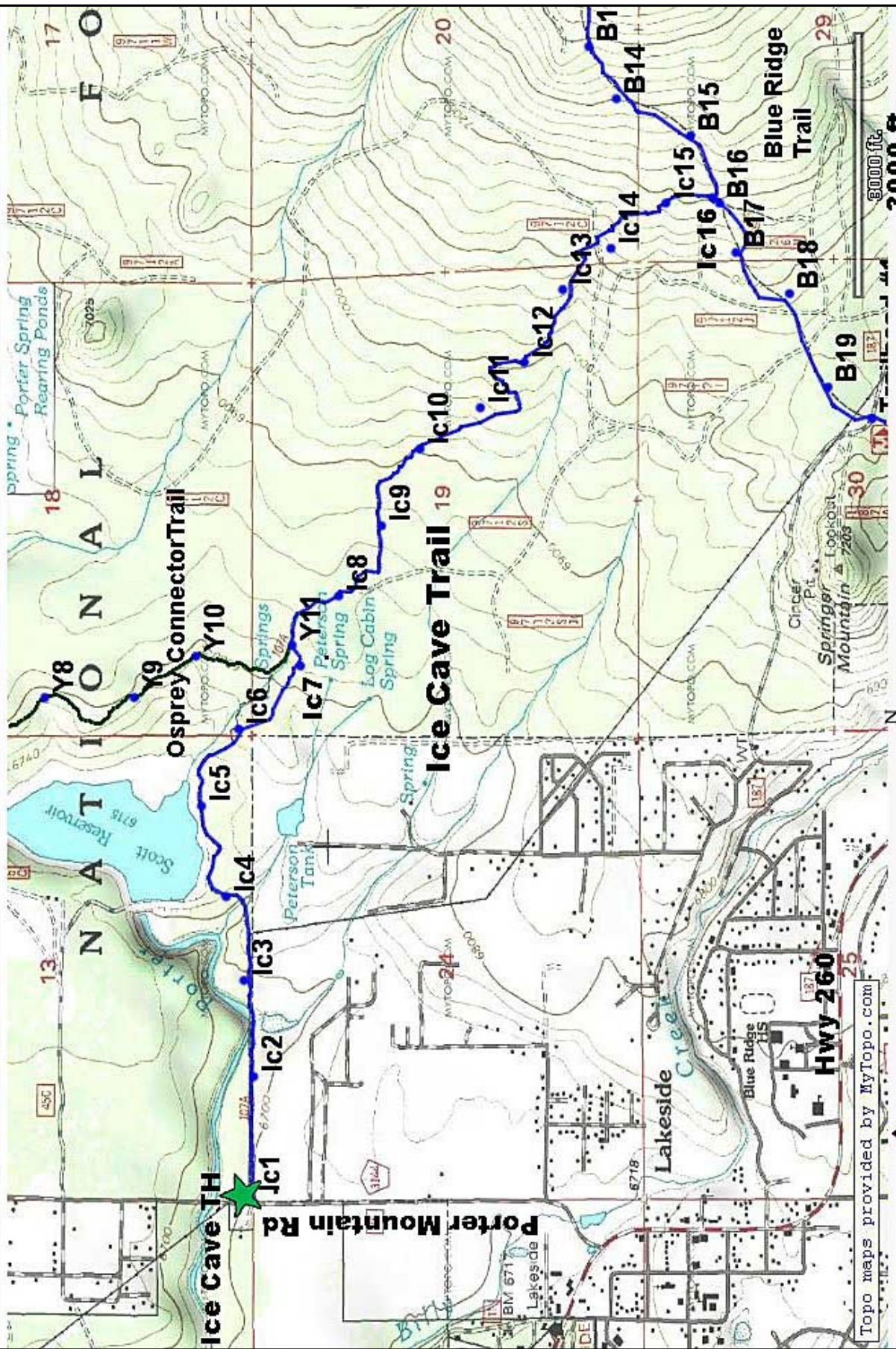
**Trailhead Parking:** Yes, accommodates trailers

**Access to Trail:** From the Lakeside Ranger Station, travel south on AZ 260 0.1 mile. Turn left on Porter Mountain Road, (FR 45) for 1 mile. The trailhead is on the right. (about 0.1 mile past the middle school roundabout)

**Trail Highlights:** The trail winds its way along Porter Creek and the South side of Scott Reservoir before connecting to the Osprey Connector and the Blue Ridge Trail. Midway along the trail is the "Ice Cave"  
The cave is really a lava tube. The name "Ice Cave" probably came from the constant flow of cool air (about 52 degrees F) leaving the cave. The cave is currently fenced off by the USFS for protection and preservation.



This trail has coded white diamonds, approximately ¼ mile apart, which correspond to the codes on the map below. If you need to call 911 for an emergency, tell the 911 operator the code on the nearest white diamond so that emergency responders can more readily locate you.



- Trail Diamonds
- Connector - Green Dots
- Shortcut = Yellow Dots
- Vista - Red Dots

Topo maps provided by MyTopo.com

8/5/2013