

# Osprey Connector #636C



**Distance:** 2.5 miles

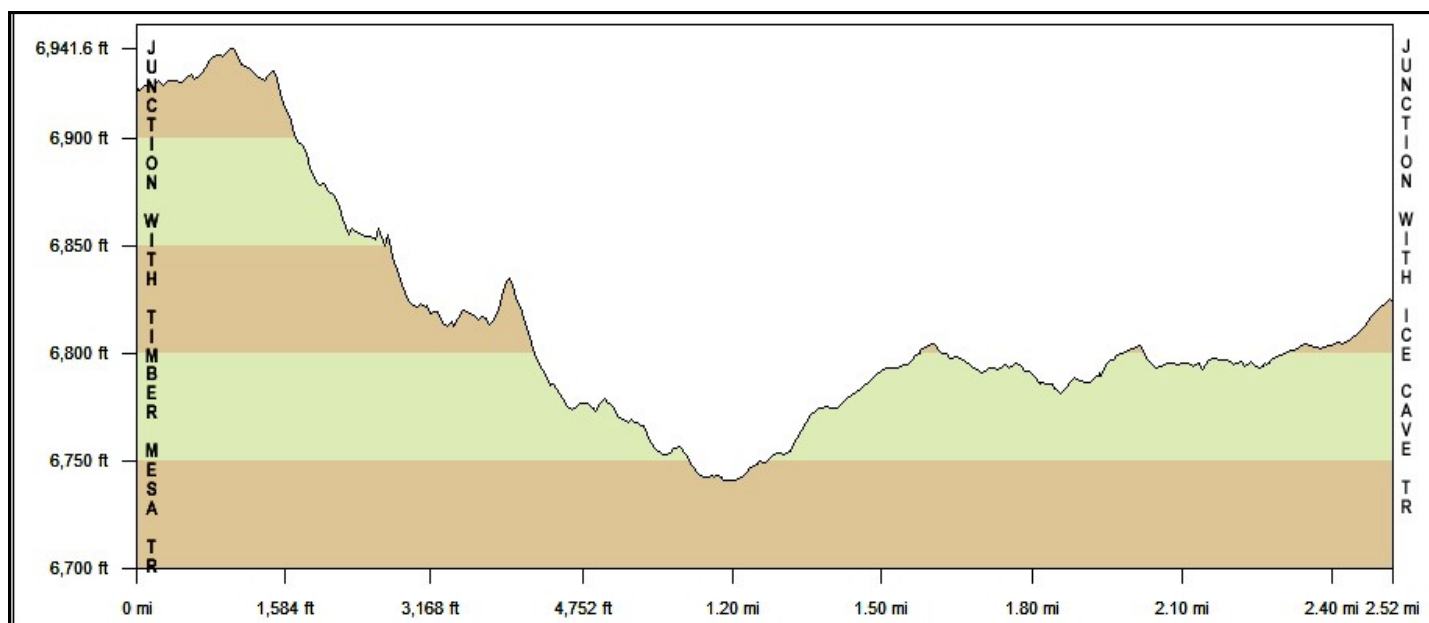
**Difficulty: (as rated by the US Forest Service)**

Hiking - Moderate  
Mountain Biking - Moderate  
Equestrian - Moderate

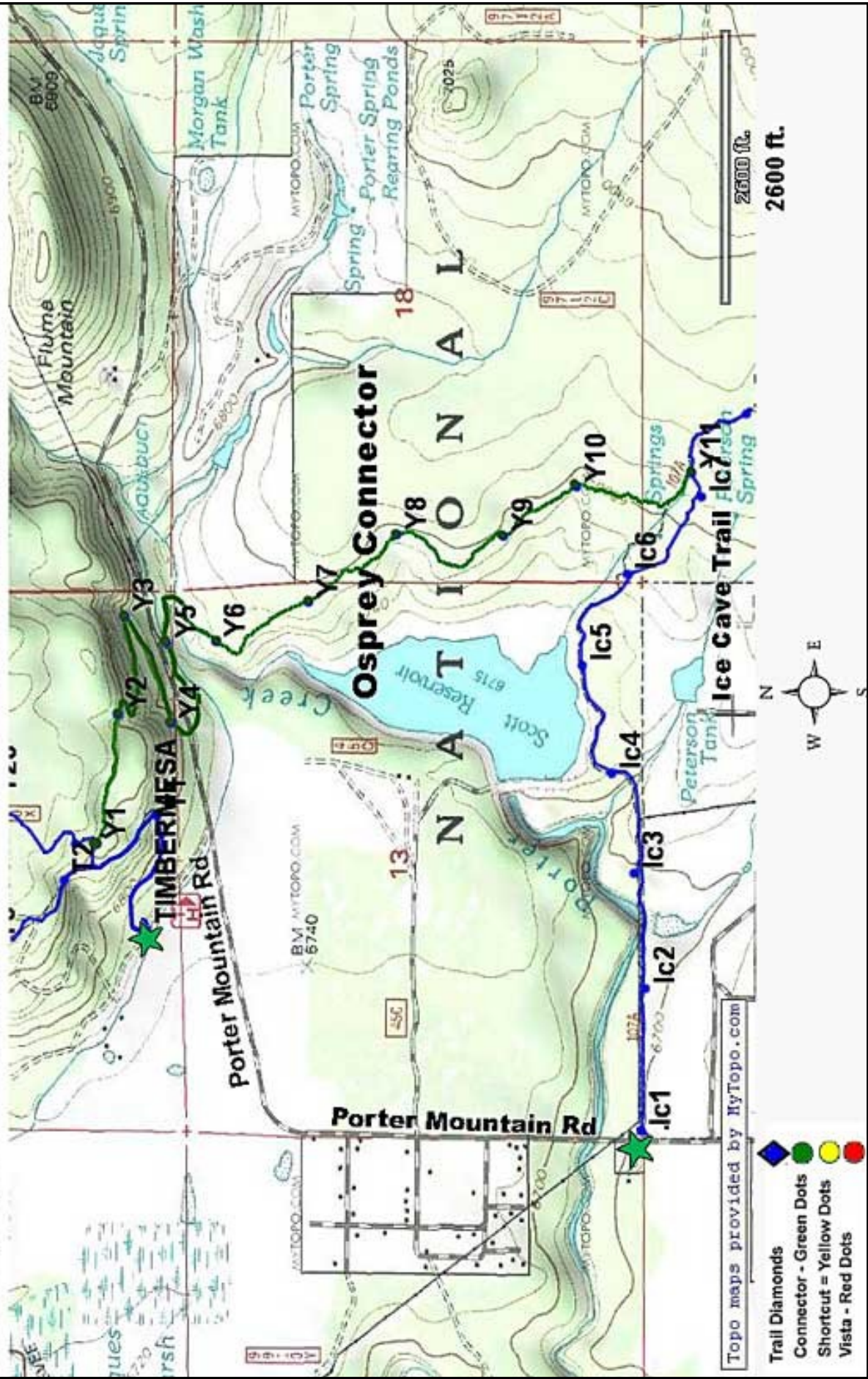
**Trailhead Parking:** Yes. Accommodate trailers at Timber Mesa Trailhead.

**Access to Trail:** From the Lakeside Ranger Station, travel South on AZ 260 for .1 mile. Turn Left on Porter Mountain Rd (FR 45) for 1.7 miles, then turn right at the junction of Porter Mountain Rd and Penrod, and continue on Porter Mountain Rd for .5 mi to Timber Mesa Trailhead on the Left. Or, access from the Ice Cave Trailhead on Porter Mountain Road.

**Trail Highlights:** The Osprey Connector enables access to the White Mountains Trail System from the Timber Mesa Trail and connects to other trails, including Ice Cave, Blue Ridge, Springs, County Club, Los Burros and Land of the Pioneers. The Osprey thus allows users to take significantly longer hikes or horseback/mountain bike rides by connecting to other trails. There are beautiful views of Scotts Reservoir from the Osprey. NOTE: The Osprey includes a water crossing and users are urged and cautioned not to cross when the water level is high. Please close each gate on the trail.



This trail has coded white diamonds, approximately ¼ mile apart, which correspond to the codes on the map below. If you need to call 911 for an emergency, tell the 911 operator the code on the nearest white diamond so that emergency responders can more readily locate you.



- Trail Diamonds
- Connector - Green Dots
- Shortcut - Yellow Dots
- Vista - Red Dots

Topo maps provided by MyTopo.com

2600 ft.  
2600 ft.

